



## Sligo Advance Office Building

IDA Business & Technology Park,  
Finisklin,  
Sligo

 **IDA Ireland**



## Building details

- Advance Office Building comprising c. 4,580 m<sup>2</sup> (c. 49,328 ft<sup>2</sup>) Gross Internal Area on a site of c. 1.25 hectares (c. 3.08 acres)
- Raised access floor, suspended ceilings, stairs and lift, lighting and air conditioning
- Can accommodate requirements from 50 to 300 desks.
- Toilets and showers available on each floor. Cat 6 cabling to Comms room
- 114 car parking spaces with x 6 e-car charging spaces with terminals and dedicated bicycle storage

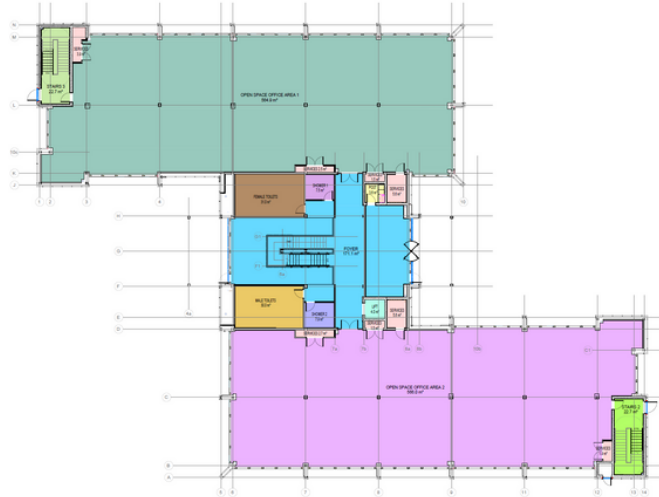
## Sustainability

- Building Energy Rating: A3
- Designed to achieve LEED Silver certification and nZEB compliance



# Specification

GROUND FLOOR PLAN



FIRST FLOOR PLAN



SECOND FLOOR PLAN



### Ground Floor area

- c. 1,495 m<sup>2</sup>
- c. 16,100 ft<sup>2</sup>

### First Floor area

- c. 1,382 m<sup>2</sup>
- c. 14,883 ft<sup>2</sup>

### Second floor area

- c. 1,379 m<sup>2</sup>
- c. 14,848 ft<sup>2</sup>

### Total area\*

- c. 4,580 m<sup>2</sup>
- c. 49,328 ft<sup>2</sup>

\*Includes substation and plant

# Accessibility

Sligo - 3km (7 minutes)  
Dublin City - 210 km (2hr 40m)  
Galway City – 141 km (2hr)

---

Ireland West International Airport –  
56km (50m)  
Dublin International Airport – 217km  
(2hr 30m)  
Shannon Airport – 208km (2hr 20m)

---

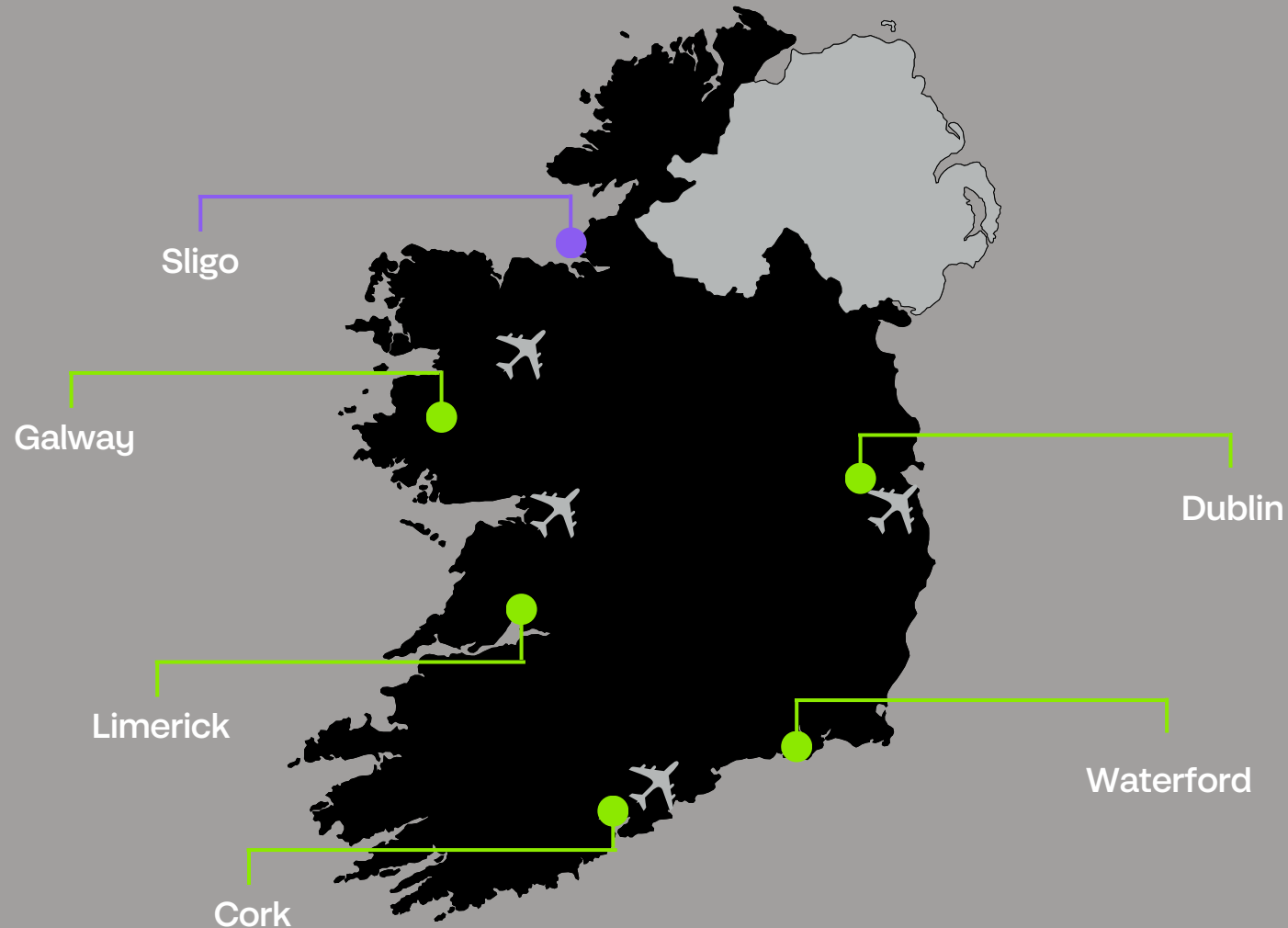
Access to 2 Universities and 4  
Institutes of Technologies

---

Sligo Port – 4 km (9m)  
Killybegs Port – 95km (1hr 16m)  
Dublin Port – 222km (2hr 39m)  
Shannon Foynes Port – 256km (2hr  
59m)

---

Current tenants on the park include  
leading multinational companies  
such as Nolato, Phibro, Abtran,  
Abbott Ireland and AT Innovate.





Exterior



Interior



Interior



Exterior



3D Virtual Tour





**Contact our team**

IDA Property Sales & Marketing, Athlone

t +353 90 6471500 | [marketing.property@ida.ie](mailto:marketing.property@ida.ie) | [www.idaireland.com](http://www.idaireland.com)